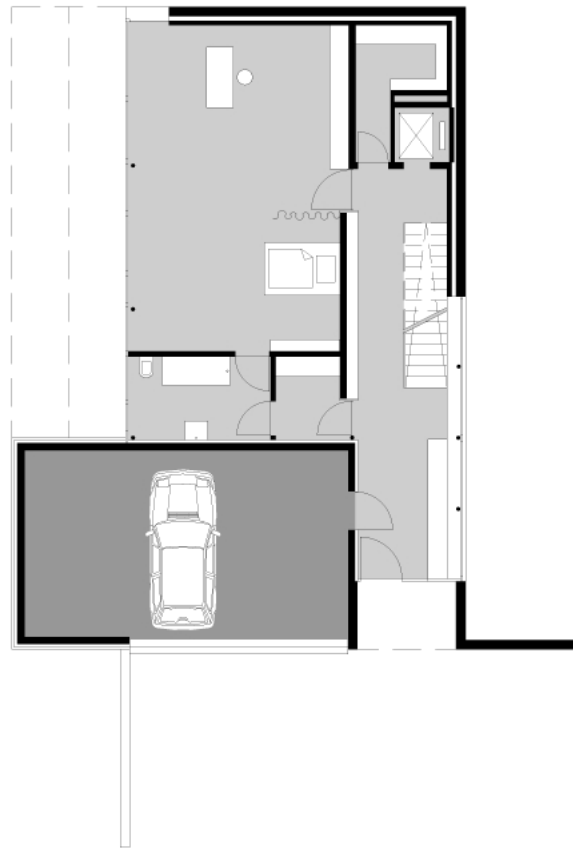


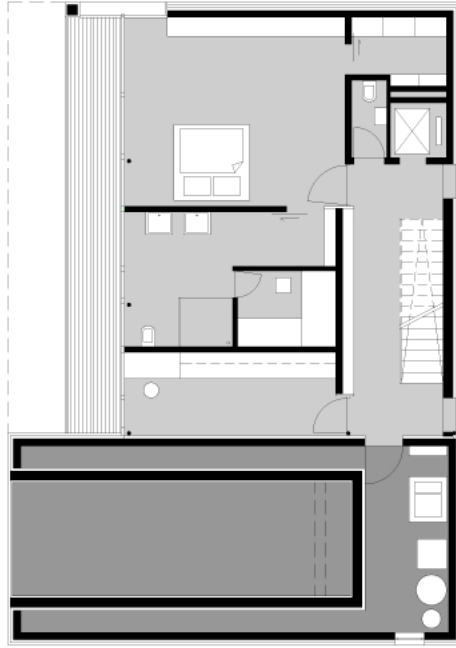
Lage

0 10 20 30 m

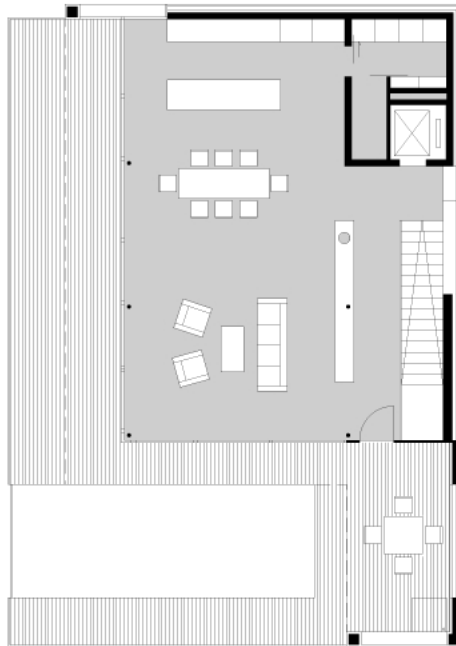


Erdgeschoss

0 2 4 6 m

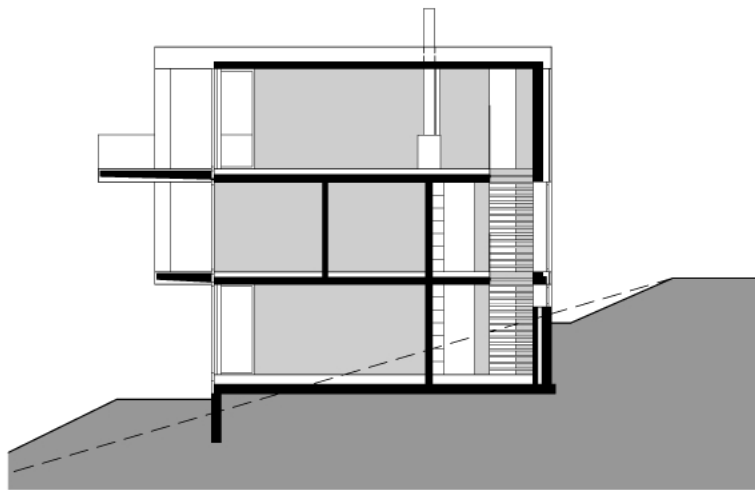


Obergeschoss

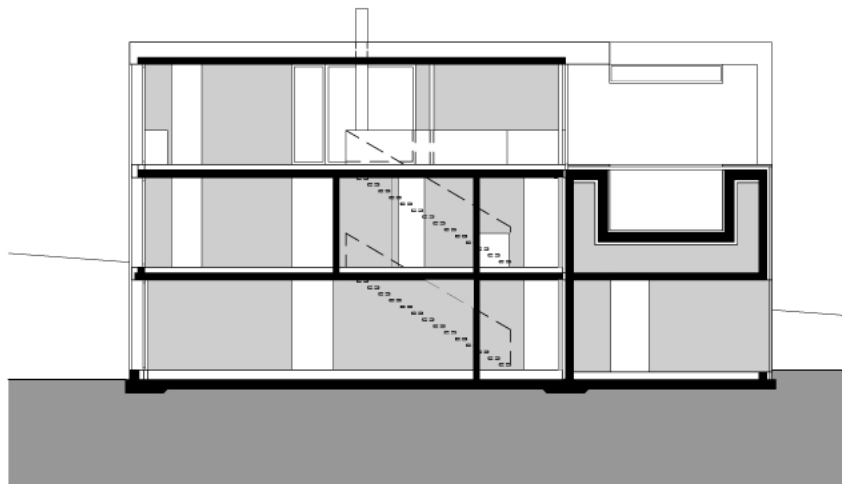


Dachgeschoss



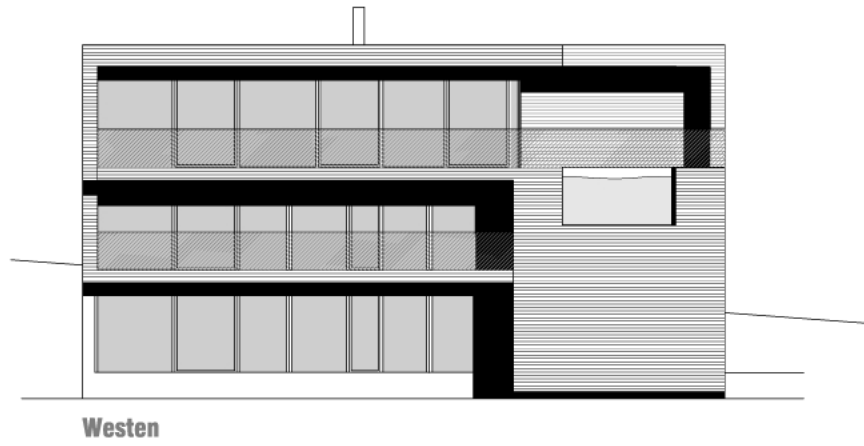


Querschnitt



Längsschnitt

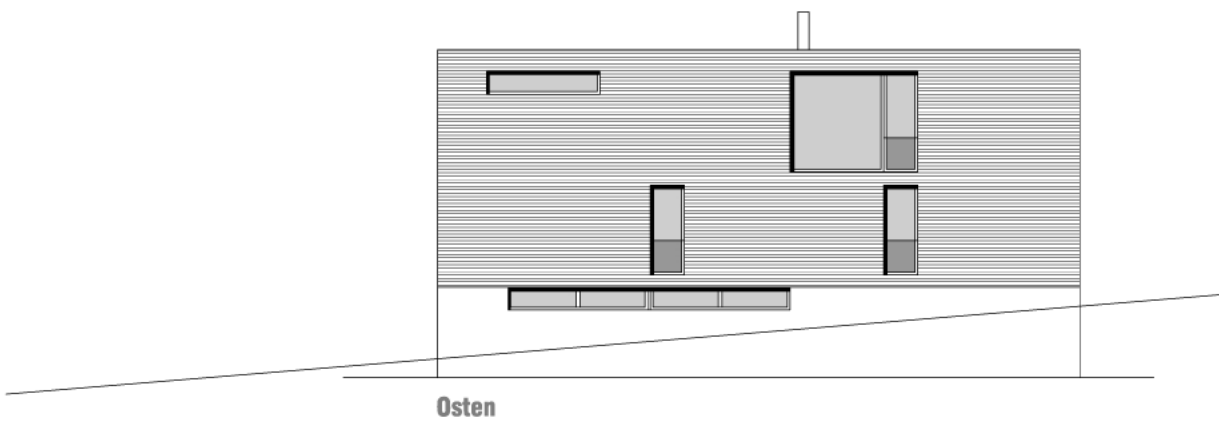
0 1 2 3 m



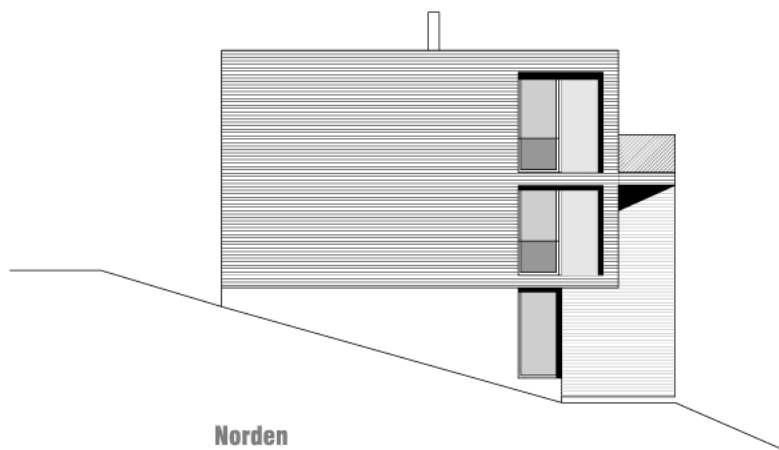
Westen



Süden



Osten



Norden

0 2 4 6 m



2004
Häfenberg 30, Dornbirn

Einfamilienhaus Rümmele-Breinbauer
Architekt Helmut Kuëss



2004
Häfenberg 30, Dornbirn

Einfamilienhaus Rümmele-Breinbauer
Architekt Helmut Kuëss